

# Trading-Go

Expert Advisors. Indicators. Scripts



[Review](#), [Advantages](#), [Operation algorithm](#), [Readings accuracy](#),  
[Recommendations](#), [Settings](#), [Video](#), [Installation](#),  
[Useful links](#), [Contacts](#)

Download or update, you can follow the [link](#).

Join our group!



## Review

The VR ATR Pro indicator is a powerful professional tool for determining target levels on a particular financial instrument. The indicator effectiveness has been proven by thousands of tests on both real and demo accounts. VR ATR Pro is an indicator that works on real data using live real statistics.

Statistics are stubborn things, using real statistics in mathematical calculations allows you to calculate accurate target levels for a financial instrument. ATR VR Pro determines levels with an accuracy of 95%. Look for further info in ["Readings accuracy"](#)



## Advantages

The indicator has a number of advantages, we will list only a portion of them:

- High accuracy.
- Simple display of target levels directly on the chart.
- Works with any financial instrument (Forex, Metals, CFD, Futures, Crypto).
- It does not redraw itself, and it always saves its readings.
- It is effective for determining the Stop Loss and Take Profit levels.
- Notifications on your smartphone, via e-mail and alerts in MetaTrader.
- MetaTrader 4 and MetaTrader 5 versions of the indicator are exactly the same.
- It is easy to setup and install.
- It is suitable both for beginners and experienced traders.
- It works on any period and any time frame.

Overview

Reviews (9)

Comments (111)

What's new

Statistics



135

**Palmix** 2018.11.24 22:59 # ★★★★★ [EN](#)

Great and pretty accurate indicator! Only on its basis it is already possible to create your own strategies! Thank you Vladimir!



143

**adam7samuel** 2018.09.23 00:51 # ★★★★★ RU

LOVE IT so much !! thank you !



605

**Qun Li** 2018.08.30 03:21 # ★★★★★ RU

User didn't leave any comment to the rating



5432

**Tim Eubanks** 2018.03.21 03:28 # ★★★★★ RU

Very good



21390

**Maksym Mudrakov** 2016.08.31 06:01 # ★★★★★ [EN](#)

Great indicator!



7170

**Rodrigo da Silva Boa** 2015.11.26 05:00 # ★★★★★ RU

Bom Indicador, Parabens ao autor.



739

**Harikrishnabhai Patel** 2015.09.19 09:44 # ★★★★★ RU

User didn't leave any comment to the rating



686

**Pavel Pavlov** 2014.12.05 12:42 # ★★★★★ [EN](#)

Respect to the author for altruism!



118

**Artem Salamatov** 2014.10.09 08:02 # [EN](#)

Thanks to Vladimir for such a good indicator, I use it as a filter to my main strategy.

## Operation algorithm

The indicator's algorithm is based on a mathematical calculation of the average price movement over the specified time period. The period indicator detects and remembers the number of points passed during the period. The indicator, using a mathematical formula calculates the average price levels for the forecast of the growth rates and the forecast of prices fall.

Thanks to use of real data, the indicator does not redraw and shows high accuracy.

The indicator can be compared to the battery indicator in your phone. You know that on average, your phone loses charge in 12-16 hours of use. Similarly, the VR ATR Pro indicator calculates the movement: if the day before yesterday the price moved 50 points, yesterday the price moved 60 points, today 55, then tomorrow the probability that the price will move average 55 points is almost 99%.

### The program displays two levels on the chart:

- The upper level is the predicted level of the price's upwards movement
- The lower level is the predicted level of the price's downwards movement

Levels can be displayed as areas that deviate from the exact level. This allows you to calculate prices within the statistical deviation range.



## Readings accuracy

The program does not show signals to buy or sell a financial instrument. The VR ATR Pro indicator calculates the target levels to which the price is aiming, the levels for which the price has enough strength and energy to reach. These levels can be used to set Stop Loss and Take Profit values.

To calculate the indicator's accuracy, it is advisable to perform a calculation based on the principle of how many times in history the price reached the levels calculated by the indicator. This way we will know the indicator's accuracy.

It is important to note that one goal, two goals, or no goals can be achieved in a single period.

Conditions for calculating VR ATR Pro indicator accuracy

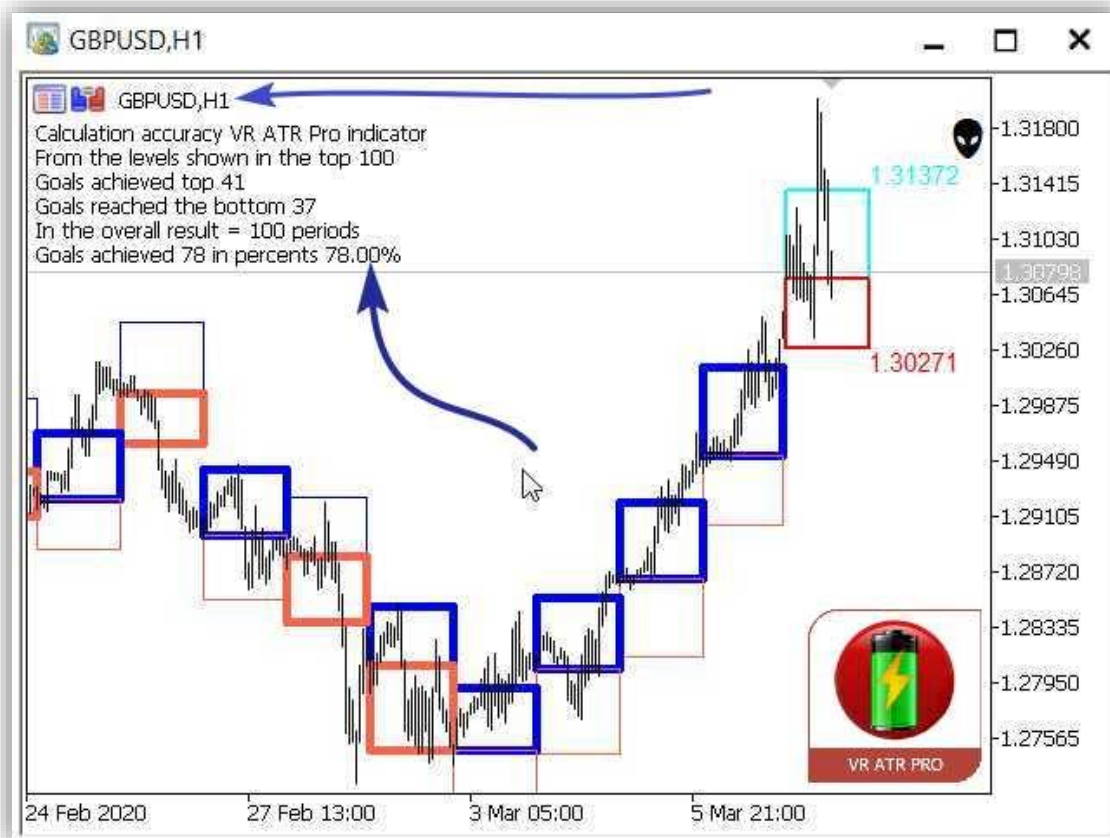
1. 5 decimals.
2. The number of periods to count is 100.
3. The period for calculating levels is 10.
4. Timeframe for calculating - Daily.
5. The calculation date 18.10.2019 – 09.03.2020.
6. The time frame for displaying the indicator is 1 hour.

**Currency pair EUR / USD Readings accuracy 88%**





## Currency pair GBP / USD Readings accuracy 78%



## Currency pair BTC / USD Readings accuracy 75%



## Recommendations

- The indicator calculation period must be less than the indicator Timeframe. In other words, for the daily VR ATR Pro, you can calculate on a 4-hour chart or less. The indicator display period must be longer than the period of your chart.
- Use the calculation of readings accuracy in the settings for new financial instruments.
- Use the indicator to calculate levels for daily periods or longer periods.
- Use the indicator in conjunction with your trading system.
- Set Take Profits inside the levels and Stop Losses outside the levels.
- Use a calculation period greater than 10 to get the most accurate results. With this approach, the likely profit will be smaller but more frequent. If you use a period less than 10, the likely profit will be larger but less frequent.
- It is better to avoid trading if the price has reached the level calculated by the indicator.
- Use the [VPS server](#) to receive alerts 24/7 on your smartphone or via e-mail

## Settings

### > > > Main settings <<<

- **Indicator calculation period** - the number of periods for calculating the average value.
- **Timeframe for calculation** - the highest timeframe for which the average value is calculated.
- **Number of days to display** - the number of displayed levels
- **Information display type** - the type of level display.
  - **Lines** - levels are displayed as horizontal lines on the higher timeframe.
  - **Rectangles** - levels are displayed as rectangles on the higher timeframe.
  - **Filled rectangles** - levels are displayed as filled rectangles on the higher timeframe.
  - **Areas** - levels are displayed as rectangular areas on the higher timeframe.
  - **Filled areas** - levels are displayed as rectangular filled areas on the higher timeframe.
- **Deviation percentage** - sets the percentage deviation from the calculated level.
- **Show indicator accuracy** - when this setting is enabled, the indicator makes an additional calculation that shows the indicator accuracy for the specified settings and the financial instrument.

### > > > Last figure settings <<<

- **Last growth figure color** - sets the color of levels for the current period.
- **Last growth figure style** - sets the style of levels for the current period.
- **Last growth figure line thickness** - sets the line thickness of levels for the current period.
- **Fill the last growth figure** - fills levels for the current period.
- **Last fall figure color** - sets the color of levels for the current period.
- **Last fall figure style** - sets the style of levels for the current period.
- **Last fall figure line thickness** - sets the line thickness of levels for the current period.
- **Fill the last drop figure** - fills levels for the current period.

### > > > History figure settings <<<

- **Growth figure color** - sets the color of levels for historical periods.
- **Growth figure style** - sets the style of levels for historical periods.
- **Growth figure line thickness** - sets the line thickness of levels for historical periods.
- **Fall figure color** - sets the color of levels for historical periods.
- **Fall figure style** - sets the style of levels for historical periods.

- **Fall figure line thickness** - sets the line thickness of levels for historical periods.

## >>> Notification <<<

- **Push** - sends push-notifications to your smartphone.
- **Mail** - enables e-mail notifications.
- **Alert** - enables Alert notifications.

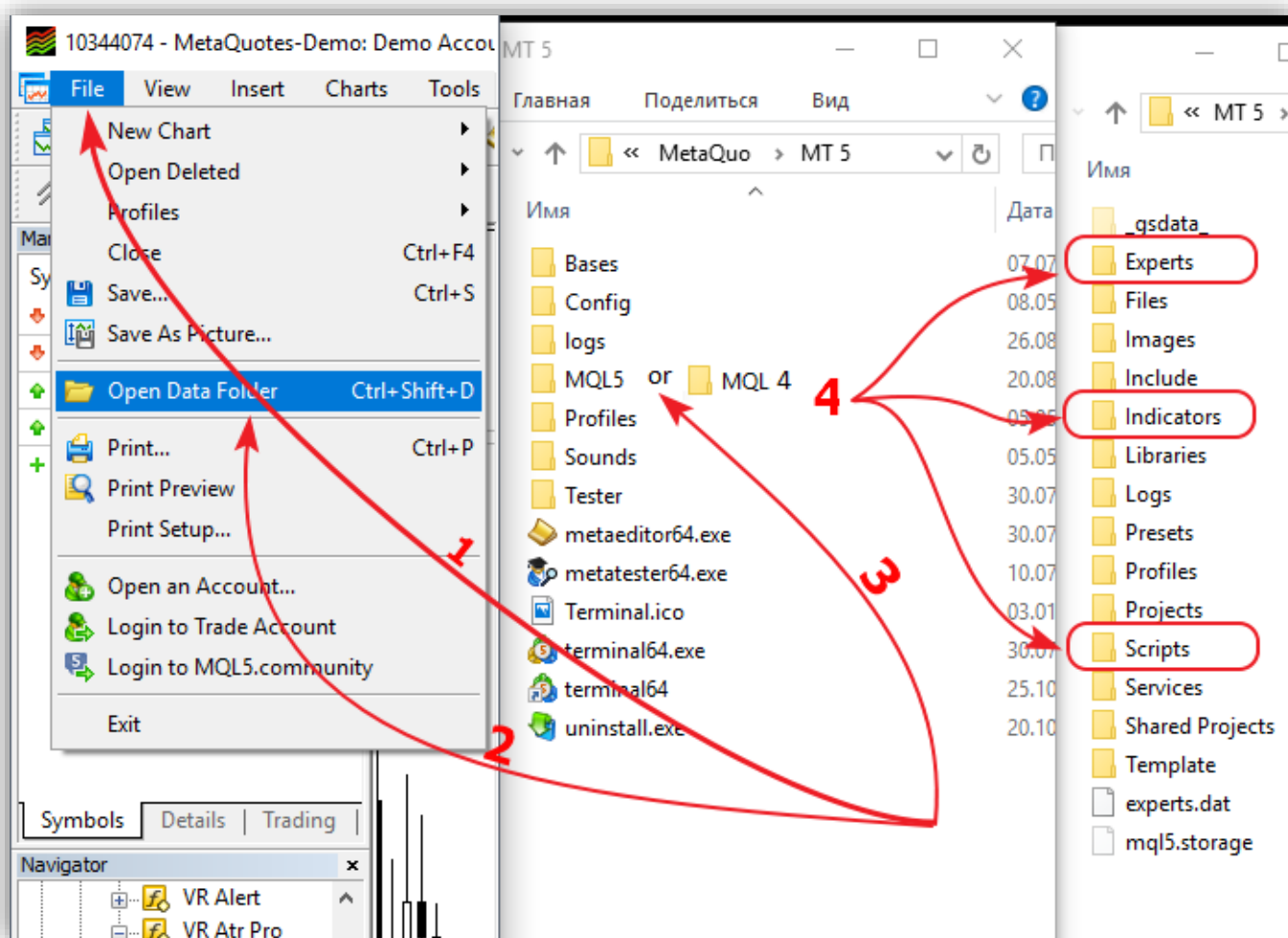
## >>> Dimensions <<<

- **Price tag text size** - sets the size of price tags.
- **Notification button size** - sets notification buttons size.
- **Button placement angle** - the angle for placing notification buttons.
- **Buttons position on the X-axis** - sets the distance to the notification buttons.
- **Buttons position on the Y-axis** - sets the distance to the notification buttons.

## Video

## Installation

- Path to install expert advisers to MT terminal > File > Open data folder > MQL > Experts
- Path to install indicators to MT terminal > File > Open data folder > MQL > Indicators
- Path to install scripts to MT terminal > File > Open data folder > MQL > Scripts
- Path to install libraries to MT terminal > File > Open data folder > MQL > Libraries





## Useful links



### Trading-Go

Author's official website <https://trading-go.net/>. Program updates are placed on the website faster than on other resources (such as mql5). Website contains lots of other useful programs and information. After visiting site once, you will always come back to it!



### YouTube

Our [YouTube](#) channel, has lots of interesting videos dedicated to trading and trading programs. Trading lessons, and lessons to program trading strategies, descriptions and reviews of other MetaTrader programs. Don't forget to subscribe!



### VPS Hosting

Recommended VPS/VDS server. For "non-stop" trading. You need a private server to trade 24/7? Best solution tested by us, is a hosting company [Fozzy](#). To receive a one-time discount 10% specify a promo code at the initial registration: **trading-go**

### Contacts and technical support

Telegram (chat): [tradinggo](#)

Skype (chat): [trading-go](#)

E-mail: [trading-go@trading-go.ru](mailto:trading-go@trading-go.ru)

Join our group!

